

NEW JERSEY  
DEVELOPMENTS

J

Jamila®

NORTH COAST

16107



# About **Jamila**<sup>®</sup>

NORTH COAST

At **Jamila**<sup>®</sup>, We believe beauty is a deeply personal journey. It's not about extravagance, but about finding joy in the subtle details and the simple pleasures of life. We invite you to experience a world where luxury means pure experiences, not just material possessions.

At Jamila, we cherish easy living, mindful moments, and the beauty that surrounds us.



# **Jamila**<sup>®</sup> Location

NORTH COAST

## Location

Sidi Heneish

**2.30** Hours from Cairo Gates

**35** Minutes from International Airport

**5** Minutes away from Almazah Bay

**1.5** Hours from New Alamein

 Land Area **130** Acres

 Foot print **9** %

 Beach front **700** M

 Green spaces & water features **91** %

Delivery date: **3** years

 **SAG**  
CONSULTING GROUP  
—Expertise House—

 **ARL**  
GROUP

 **REIHI**  
Beach club house

 **Balance**  
property management

 **Prime**  
Consultancy, Spain



# Facilities & Amenities

- 5 stars hotel
- F&B include all international franchises
- Commercial Mall include all international brands
- Sandy Swimming Pools
- Club House  
Dancing fountain
- Gym & Spa
- Underground parking
- Beach Club house
- Kids Area





# Products

Unit type

Cabanas

Chalet

**1** bedroom  
**2** bedrooms  
**3** bedrooms

Duplex

Starting form  
**2** bedrooms

D-villa

Starting form  
**2** bedrooms

# Spaces Starts From

**79** M2

# Payment Plan

Down

Payment : **10** % - Over **8** Years





# Layout & Design

Jamila is divided into two phases

■ First Phase  
with area of **50** acres

■ Second phase  
with an area of **80** acres



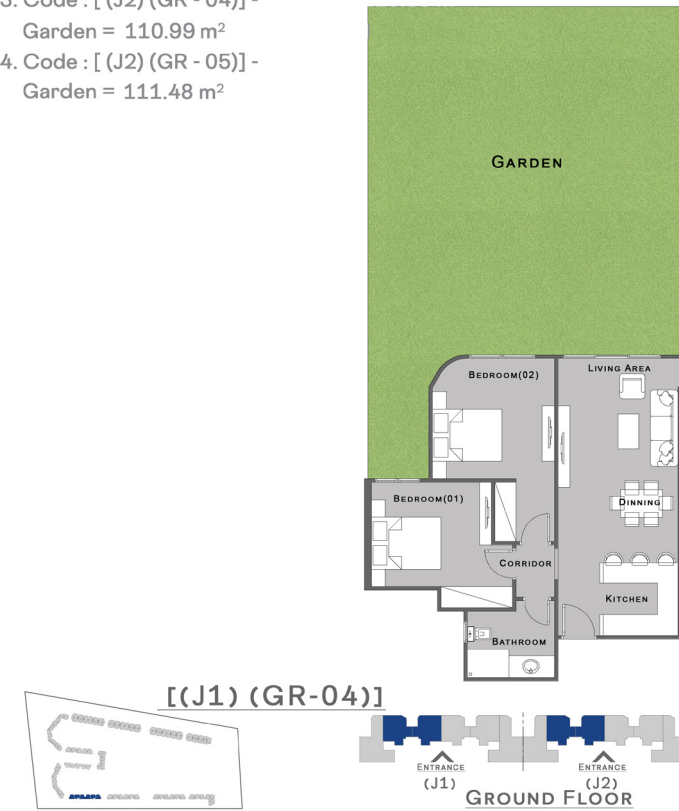


# Ground Floor

## 2 Bedrooms Unit

Area = **98** M<sup>2</sup>

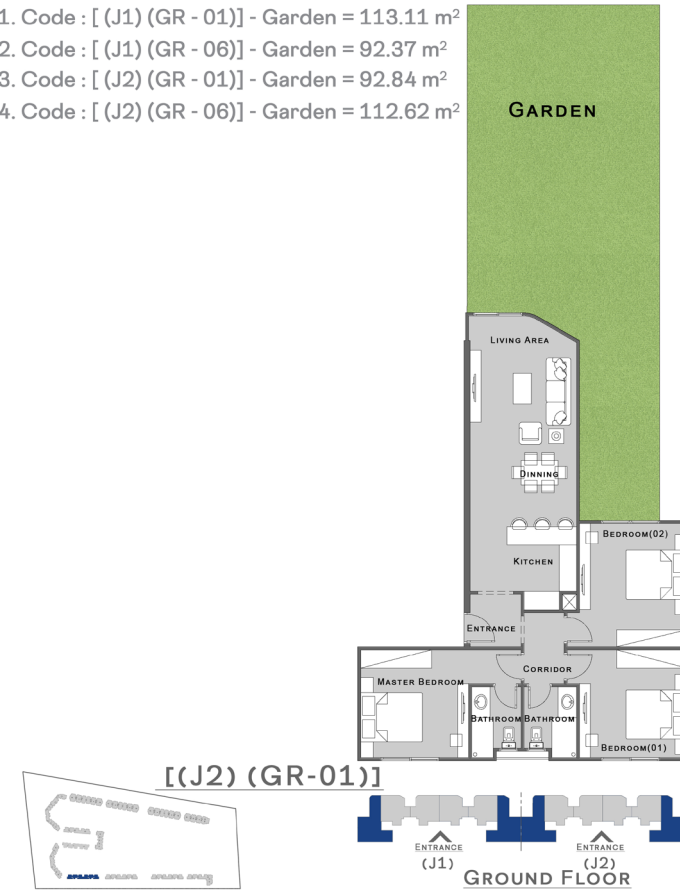
1. Code : [(J1) (GR - 04)] - Garden = 110.98 m<sup>2</sup>
2. Code : [(J1) (GR - 05)] - Garden = 111.48 m<sup>2</sup>
3. Code : [(J2) (GR - 04)] - Garden = 110.99 m<sup>2</sup>
4. Code : [(J2) (GR - 05)] - Garden = 111.48 m<sup>2</sup>



## 3 Bedrooms Unit

Area = **138** M<sup>2</sup> & **139** M<sup>2</sup>

1. Code : [(J1) (GR - 01)] - Garden = 113.11 m<sup>2</sup>
2. Code : [(J1) (GR - 06)] - Garden = 92.37 m<sup>2</sup>
3. Code : [(J2) (GR - 01)] - Garden = 92.84 m<sup>2</sup>
4. Code : [(J2) (GR - 06)] - Garden = 112.62 m<sup>2</sup>

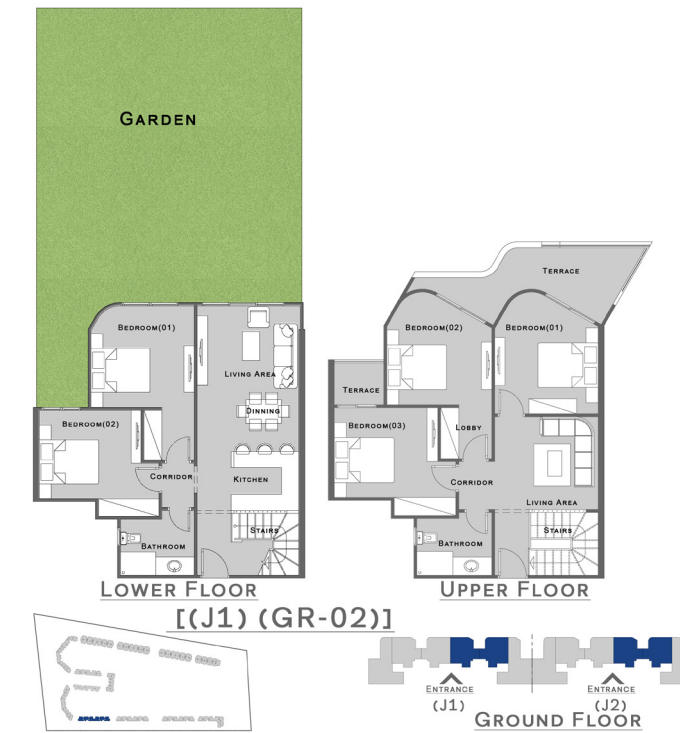


# Ground Floor

## Duplex Unit

Area = **207** M<sup>2</sup> & **217** M<sup>2</sup>

1. Code : [(J1) (GR - 02)] - Garden = 110.98 m<sup>2</sup>
2. Code : [(J1) (GR - 03)] - Garden = 111.48 m<sup>2</sup>
3. Code : [(J2) (GR - 02)] - Garden = 110.98 m<sup>2</sup>
4. Code : [(J2) (GR - 03)] - Garden = 111.48 m<sup>2</sup>

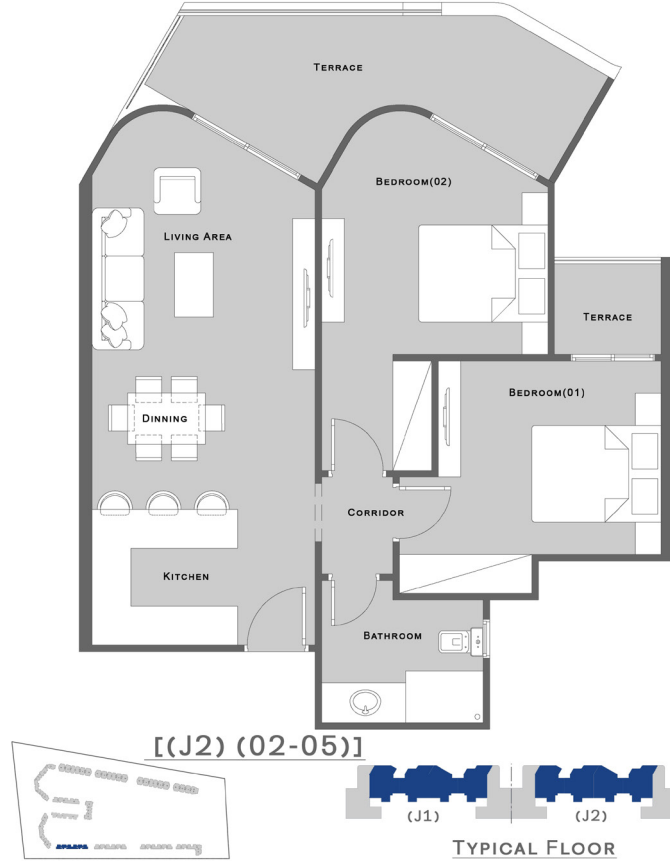




# Typical Floor

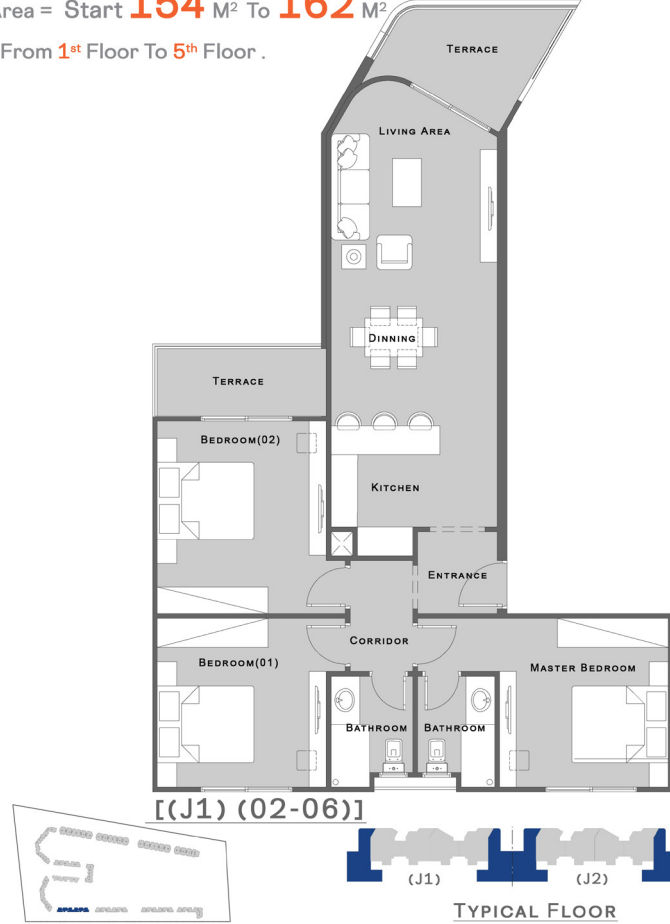
## 2 Bedrooms Unit

Area = Start **109** M<sup>2</sup> To **123** M<sup>2</sup>  
 - From 1<sup>st</sup> Floor To 5<sup>th</sup> Floor .



## 3 Bedrooms Unit

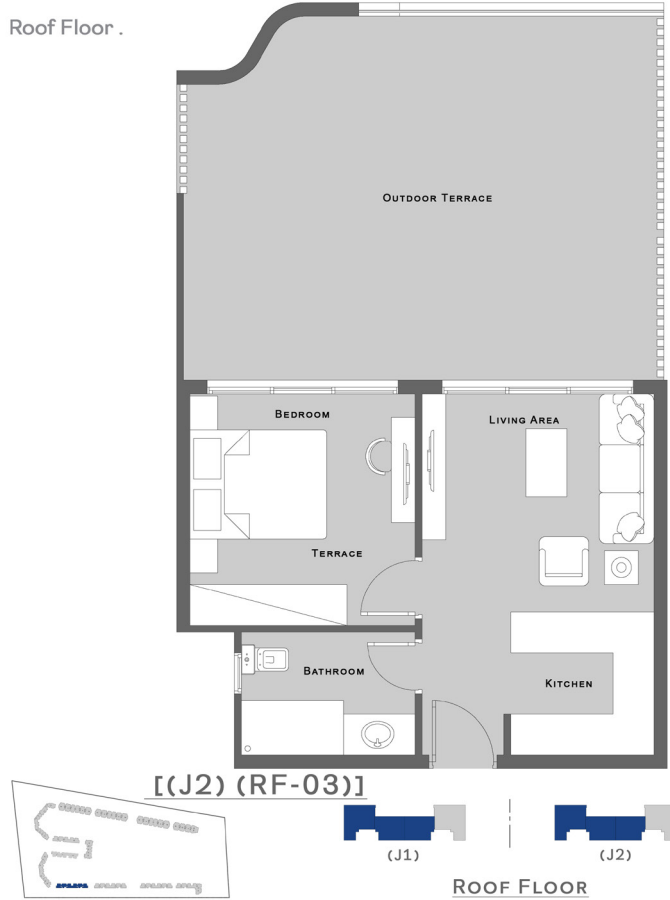
Area = Start **154** M<sup>2</sup> To **162** M<sup>2</sup>  
 - From 1<sup>st</sup> Floor To 5<sup>th</sup> Floor .



# Roof Floor

## 1 Bedroom

Area = **57** M<sup>2</sup> & **75.40** M<sup>2</sup>  
 - Roof Floor .



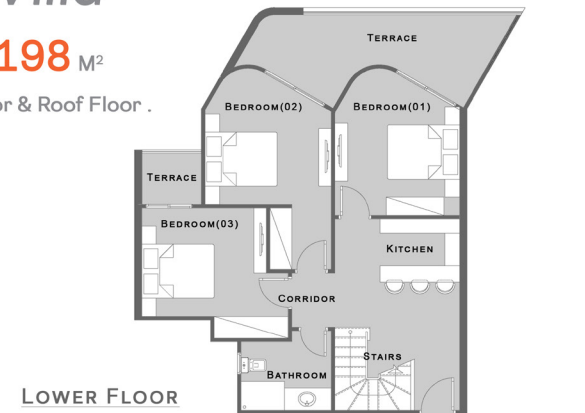


# Roof Floor



## D - Villa

Area = **198 M<sup>2</sup>**  
- 5<sup>th</sup> Floor & Roof Floor .







**NJD** NEW JERSEY  
DEVELOPMENTS

**Jamila**®  
NORTH COAST

[www.jamilanorthcoast.com](http://www.jamilanorthcoast.com)