

NEW JERSEY
DEVELOPMENTS



Jamila®

NORTH COAST

16107

About **Jamila**[®]

NORTH COAST

At **Jamila**[®], We believe beauty is a deeply personal journey. It's not about extravagance, but about finding joy in the subtle details and the simple pleasures of life. We invite you to experience a world where luxury means pure experiences, not just material possessions.

At Jamila, we cherish easy living, mindful moments, and the beauty that surrounds us.



Jamila[®] Location

NORTH COAST

Location

Sidi Heneish

2.30 Hours from Cairo Gates

35 Minutes from International Airport

5 Minutes away from Almazah Bay

1.5 Hours from New Alamein

 Land Area **130** Acres

 Foot print **9** %

 Beach front **700** M

 Green spaces & water features **91** %

Delivery date: **3** years

 SAG
CONSULTING
GROUP
—Expertise House—

 ARI
GROUP

 REIHI
Beach club house

 Balance
property management

 Prime
Consultancy, Spain

Facilities & Amenities

- 5 stars hotel
- F&B include all international franchises
- Commercial Mall include all international brands
- Sandy Swimming Pools
- Club House
Dancing fountain
- Gym & Spa
- Underground parking
- Beach Club house
- Kids Area



Products

Unit type

Cabanas

Chalet

1 bedroom
2 bedrooms
3 bedrooms

Duplex

Starting form
2 bedrooms

D-villa

Starting form
2 bedrooms

Spaces Starts From

79 M2

Payment Plan

Down

Payment : **10** % - Over **8** Years



Layout & Design

Jamila is divided into two phases

■ First Phase
with area of **50** acres

■ Second phase
with an area of **80** acres

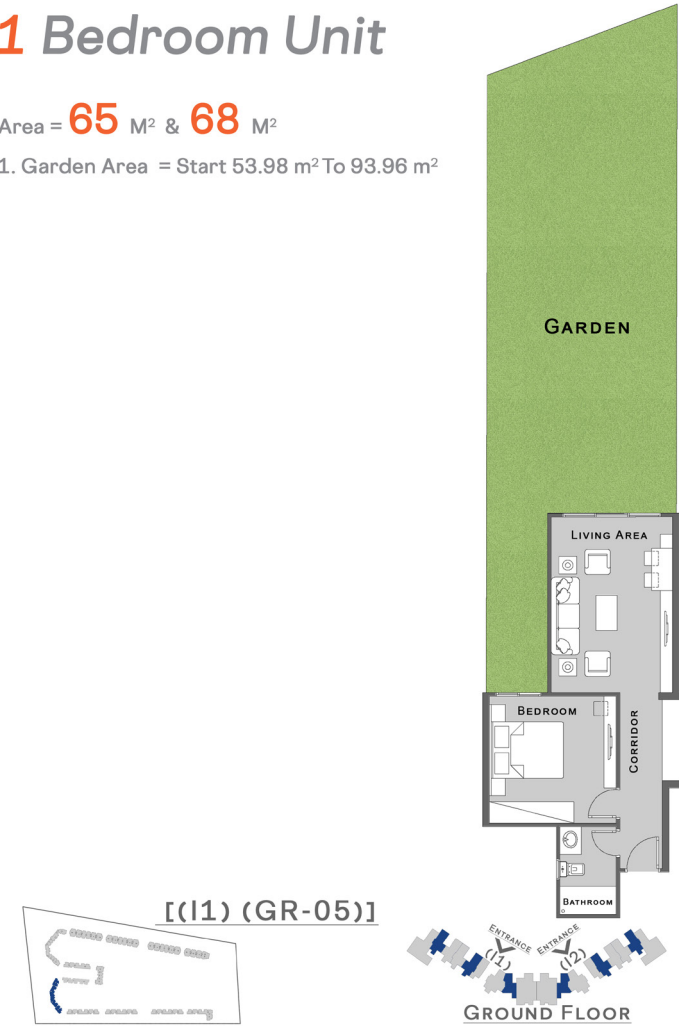


Ground Floor

1 Bedroom Unit

Area = **65** M² & **68** M²

1. Garden Area = Start 53.98 m² To 93.96 m²

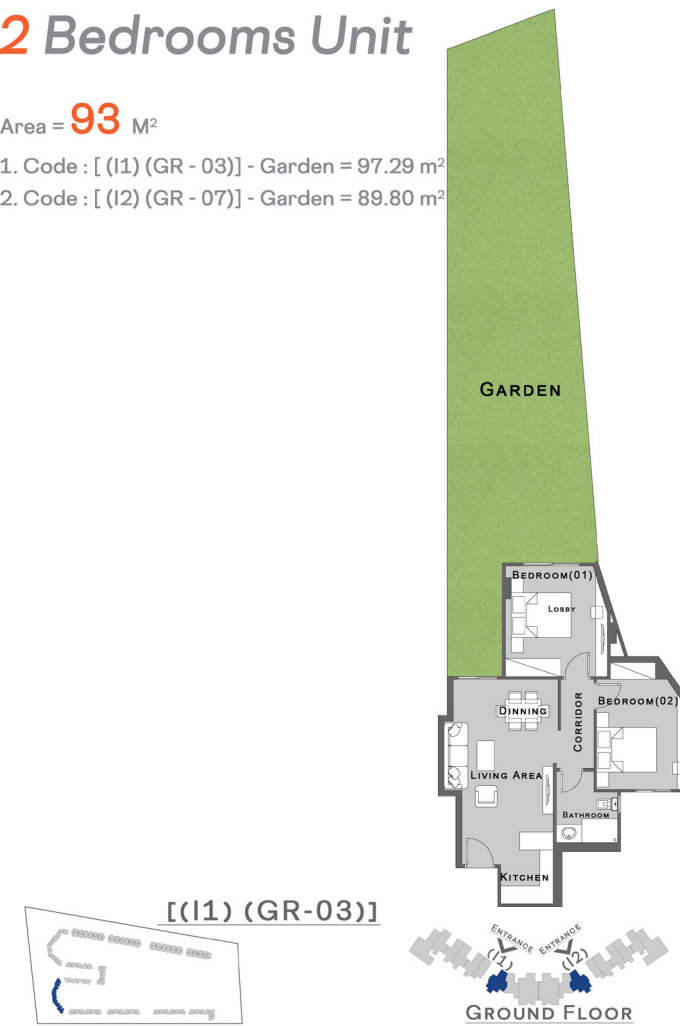


2 Bedrooms Unit

Area = **93** M²

1. Code : [(I1) (GR - 03)] - Garden = 97.29 m²

2. Code : [(I2) (GR - 07)] - Garden = 89.80 m²



Ground Floor

3 Bedrooms Unit

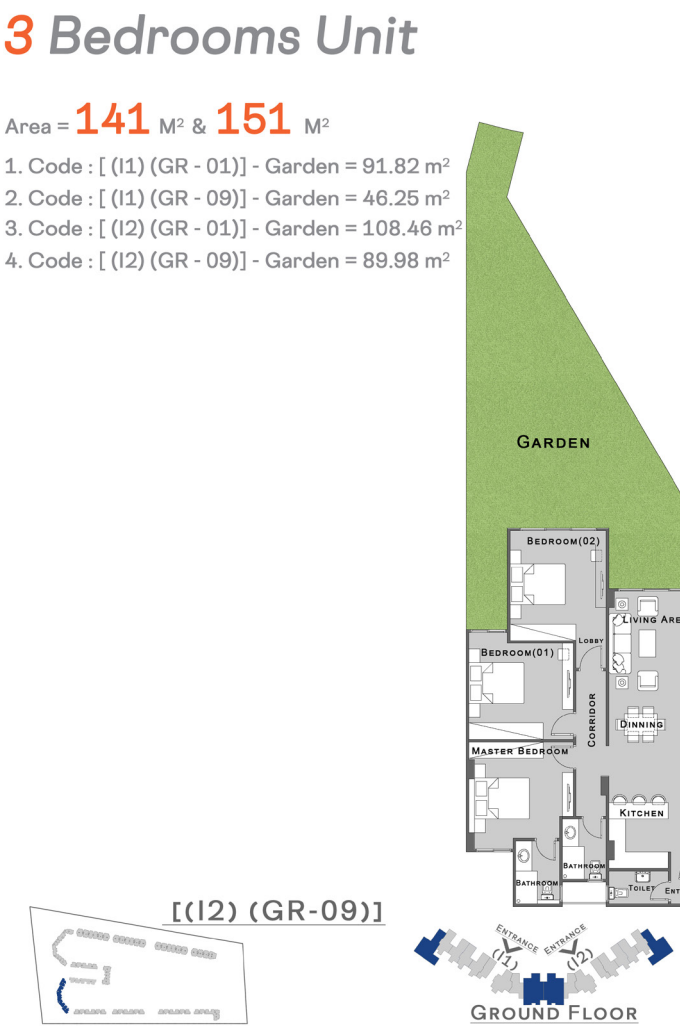
Area = **141** M² & **151** M²

1. Code : [(I1) (GR - 01)] - Garden = 91.82 m²

2. Code : [(I1) (GR - 09)] - Garden = 46.25 m²

3. Code : [(I2) (GR - 01)] - Garden = 108.46 m²

4. Code : [(I2) (GR - 09)] - Garden = 89.98 m²



Duplex Unit

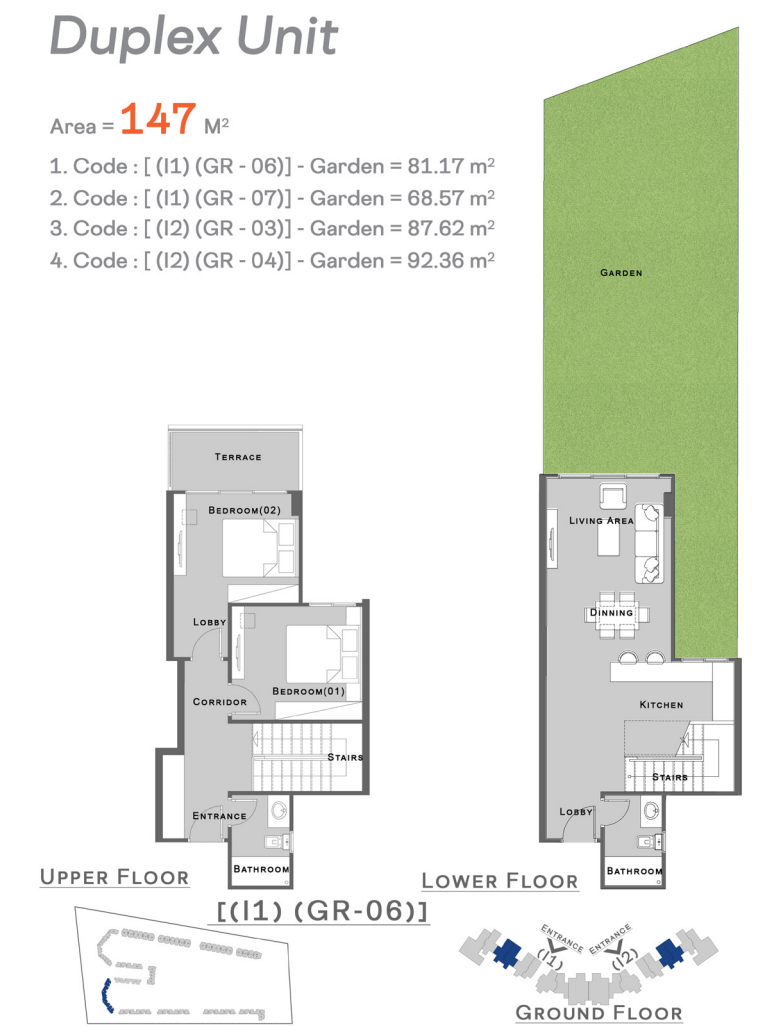
Area = **147** M²

1. Code : [(I1) (GR - 06)] - Garden = 81.17 m²

2. Code : [(I1) (GR - 07)] - Garden = 68.57 m²

3. Code : [(I2) (GR - 03)] - Garden = 87.62 m²

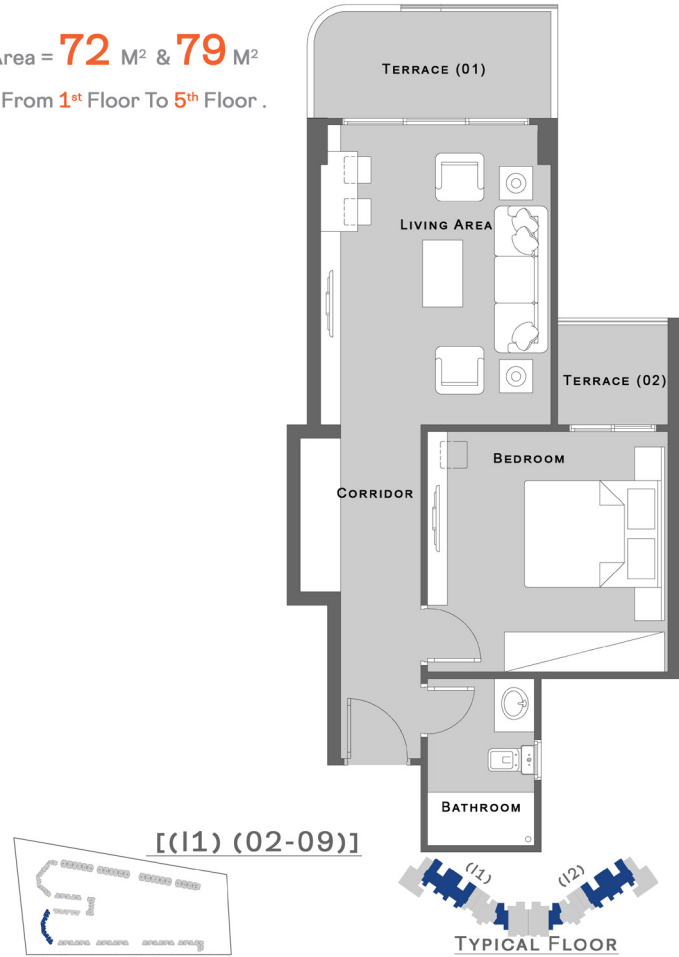
4. Code : [(I2) (GR - 04)] - Garden = 92.36 m²



Typical Floor

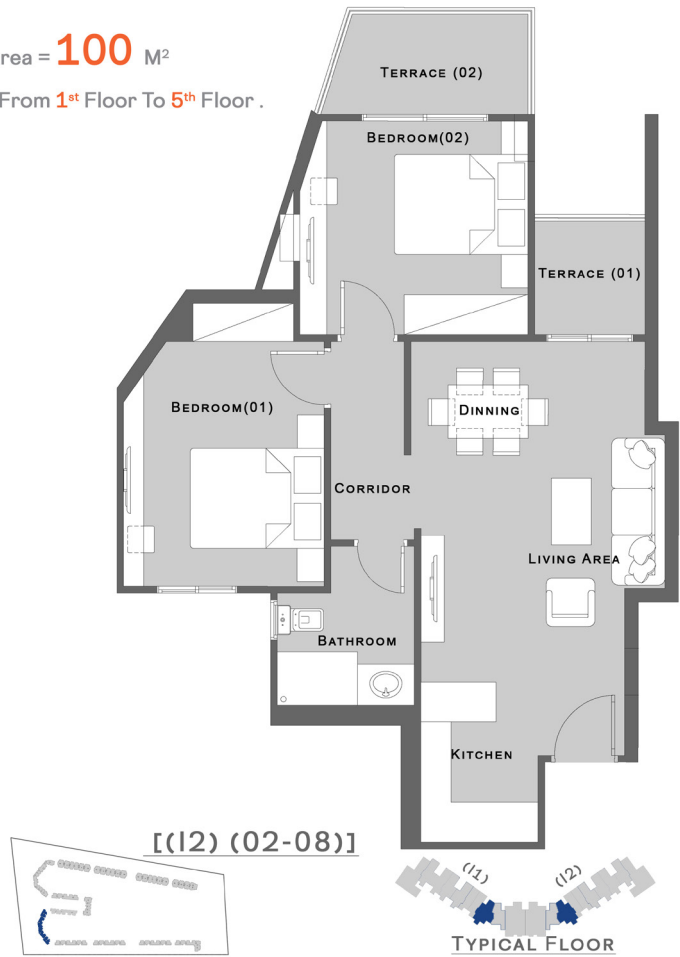
1 Bedroom Unit

Area = **72 M²** & **79 M²**
 - From **1st** Floor To **5th** Floor .



2 Bedrooms Unit

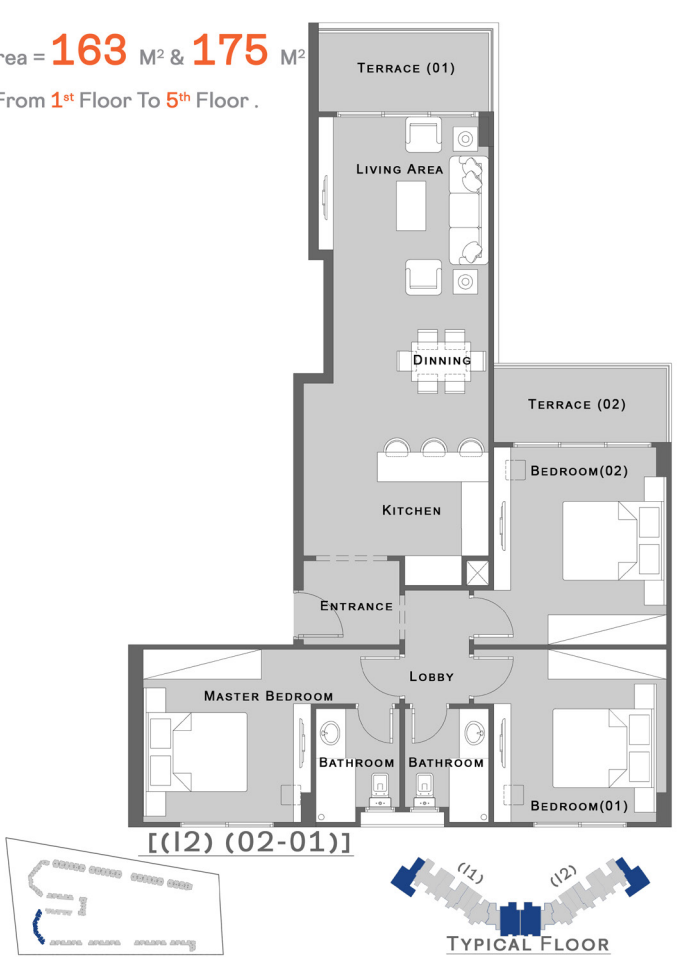
Area = **100 M²**
 - From **1st** Floor To **5th** Floor .



Typical Floor

3 Bedrooms Unit

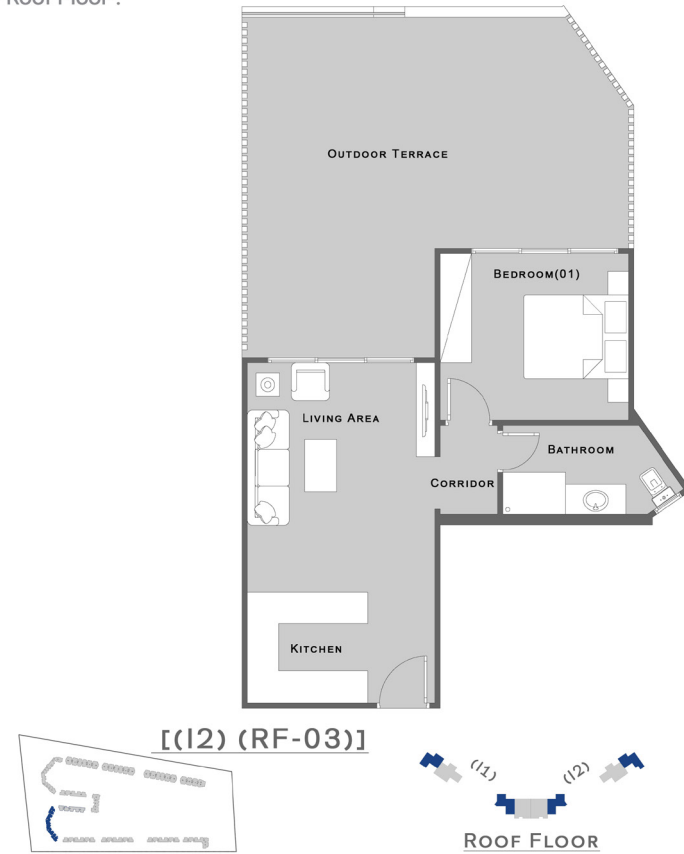
Area = **163 M²** & **175 M²**
 - From **1st** Floor To **5th** Floor .



Roof Floor

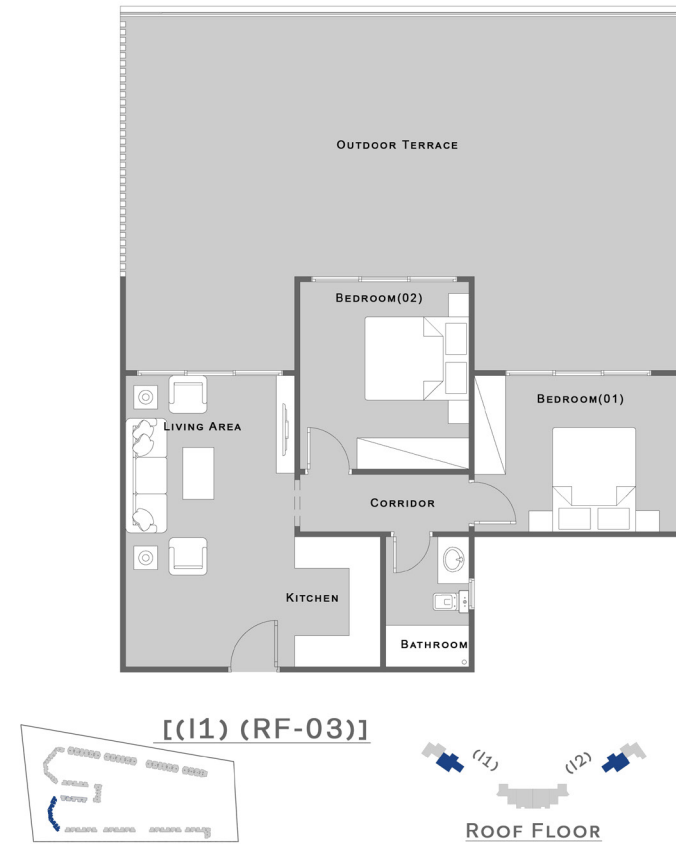
1 Bedroom Unit

Area = **59** M² & **68** M²
- Roof Floor .



2 Bedrooms Unit

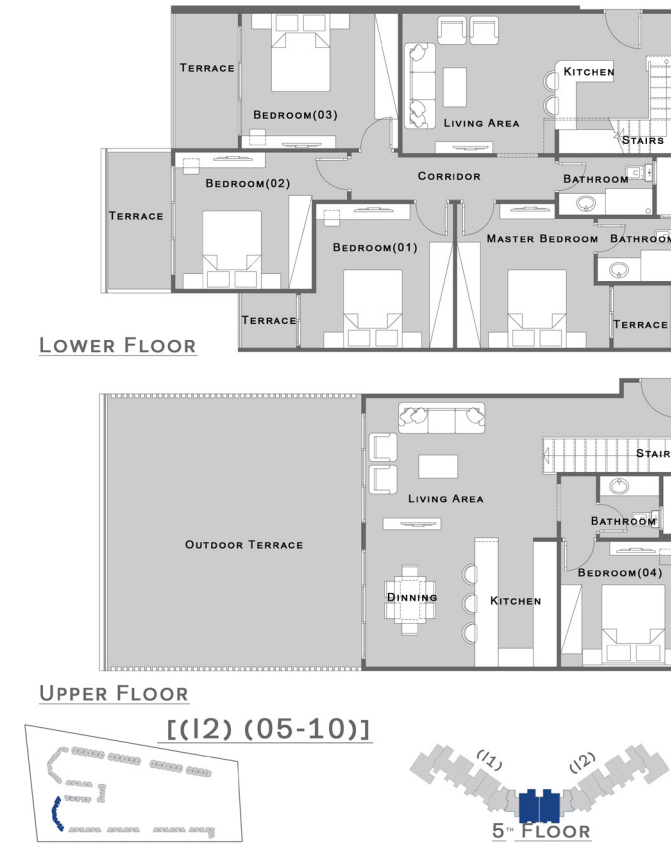
Area = **87** M²
- Roof Floor .



Roof Floor

D - Villa

Area = **260** M²
- 5th Floor & Roof Floor .





NJD NEW JERSEY
DEVELOPMENTS

Jamila®
NORTH COAST

www.jamilanorthcoast.com